



**Stoneacre**  
Properties



**Asket Avenue, Leeds, LS14 1JF**

**£165,000**

Offered for sale is this spacious three bedroom semi detached family home. The property is located in a popular area and offers a perfect opportunity for someone to modernise and upgrade. Comprising: entrance, kitchen, lounge, side entrance with storage and wc, first floor landing, three bedrooms and bathroom. Externally there is gardens to both the front and rear. Viewings are highly recommended.

### Entrance

Door to the front elevation.

### Kitchen



Double glazed window to the rear elevation. Range of wall and base units. Space for fridge/freezer and cooker. Plumbing for washing machine.

### Lounge



Double glazed window to front and rear. Built in storage/display units.

### Side Entrance Porch/Storage/WC

Ideal to use as a utility space/storage area. Guest wc.

### First Floor Landing

Doors off leading to bedrooms: one, two, three and bathroom.

### Bedroom One



Double glazed window to front elevation.

### Bedroom Two



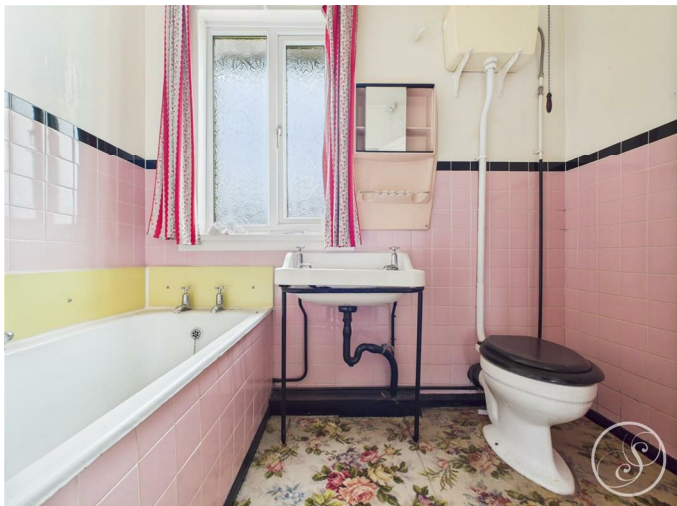
Double glazed window.

### Bedroom Three



Double glazed window.

## Bathroom



Double glazed window. Low flush w.c. Wash hand basin. Bath.

## External



Externally the property benefits from a good size garden to the rear elevation that is mainly laid to lawn. Driveway to the front of the property.

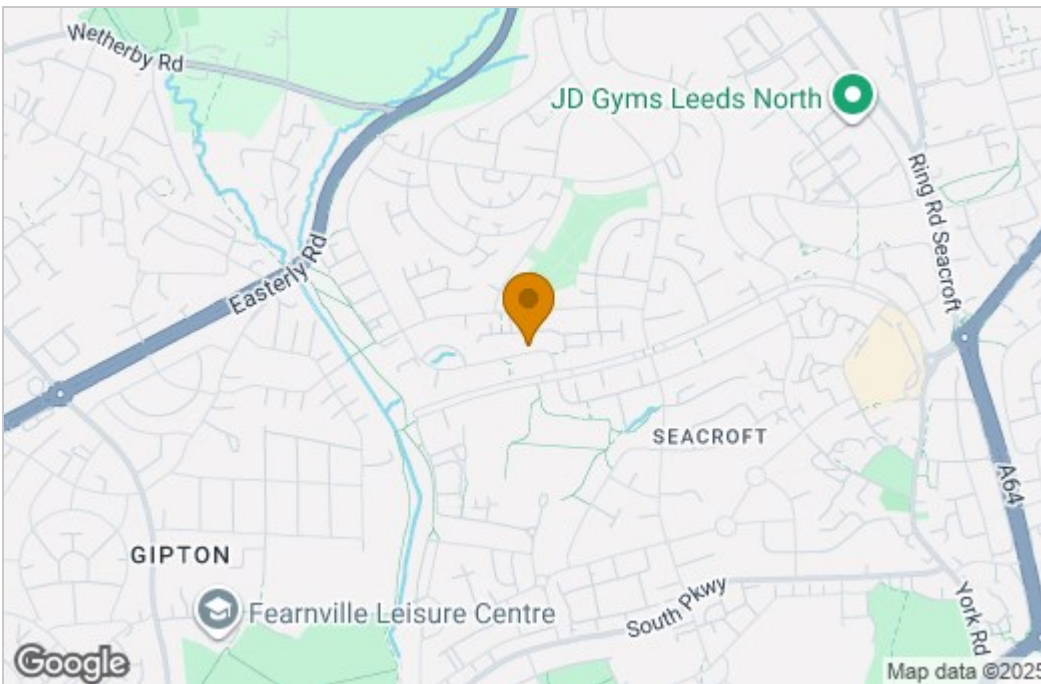
## Agent Note

We have been advised that this property is a Livett Cartwright construction (Non Standard)

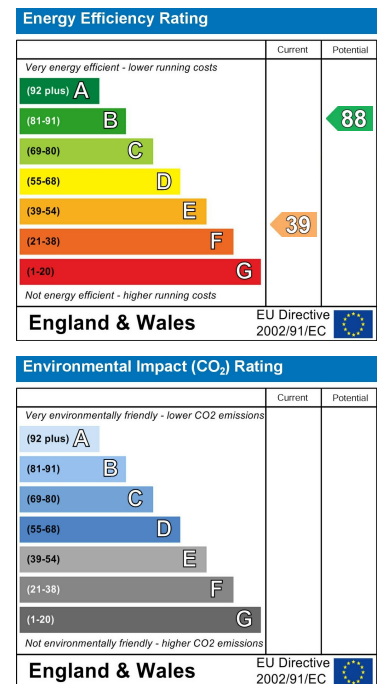
# Floor Plan



# Area Map



# Energy Efficiency Graph



These particulars, whilst believed to be accurate are set out as a general outline only for guidance and do not constitute any part of an offer or contract. Intending purchasers should not rely on them as statements of representation of fact, but must satisfy themselves by inspection or otherwise as to their accuracy. No person in this firm's employment has the authority to make or give any representation or warranty in respect of the property.

